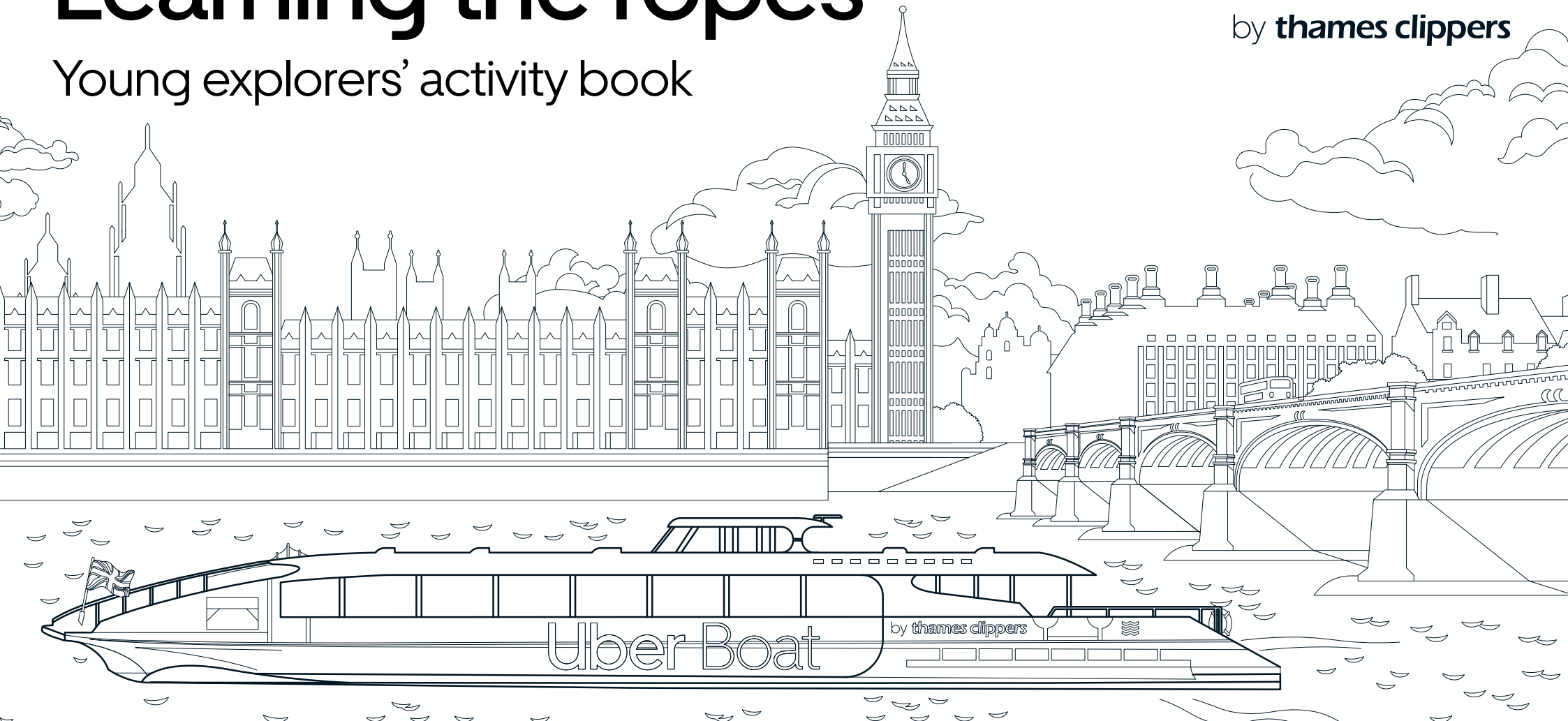


# Learning the ropes

Young explorers' activity book

Uber Boat  
by **thames clippers**



Ahoy there Captain...

Write your name here

What's the name of your vessel?

Write your boat's name here



# Where to Captain?

Captains need to know a lot about the River Thames.

Can you name the missing piers on the map below?

Use the clues to help!



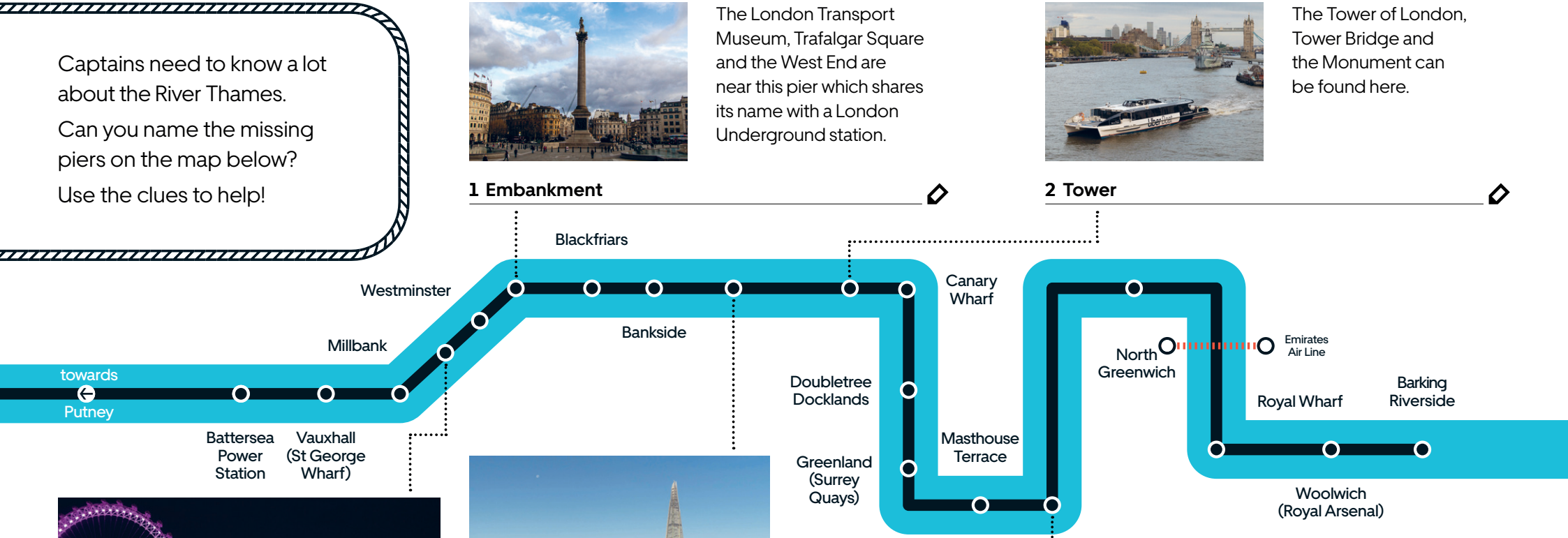
### 1 Embankment

The London Transport Museum, Trafalgar Square and the West End are near this pier which shares its name with a London Underground station.



The Tower of London, Tower Bridge and the Monument can be found here.

### 2 Tower



This pier shares the first part of its name with the observation wheel above it. The second part of its name comes from London's busiest train station which is nearby.

### 3 London Eye Waterloo



The Shard, London's tallest building, neighbours this pier, so does a bridge that is said to be falling down in the famous nursery rhyme.

### 4 London Bridge City



Home of the National Maritime Museum, the Cutty Sark and Royal Observatory, this pier serves a part of London famous for its connections to the Royal Navy.

### 5 Greenwich

Where are you sailing to?

Write your favourite pier here

# I spy

All our Captains have to learn “local knowledge” before they can steer a vessel on the Thames.

Radar technology helps Captains steer clear of other traffic on the river but it's down to our crew to spot the landmarks and help passengers get to their destinations.

Do you know which pier is nearest to these attractions?

1 One Canada Square



Canary Wharf

2 Cutty Sark



Greenwich

3 Tower Bridge



Tower

4 Battersea Power Station



Battersea

5 The O2



North Greenwich

6 London Eye



London Eye (Waterloo)

7 Emirates Air Line



North Greenwich

8 Shakespeare's Globe



Bankside

9 Houses of Parliament



Westminster

10 Tate Modern



Bankside

11 St Paul's Cathedral



Blackfriars

12 Thames Barrier



Royal Wharf

13 Tate Britain



Millbank

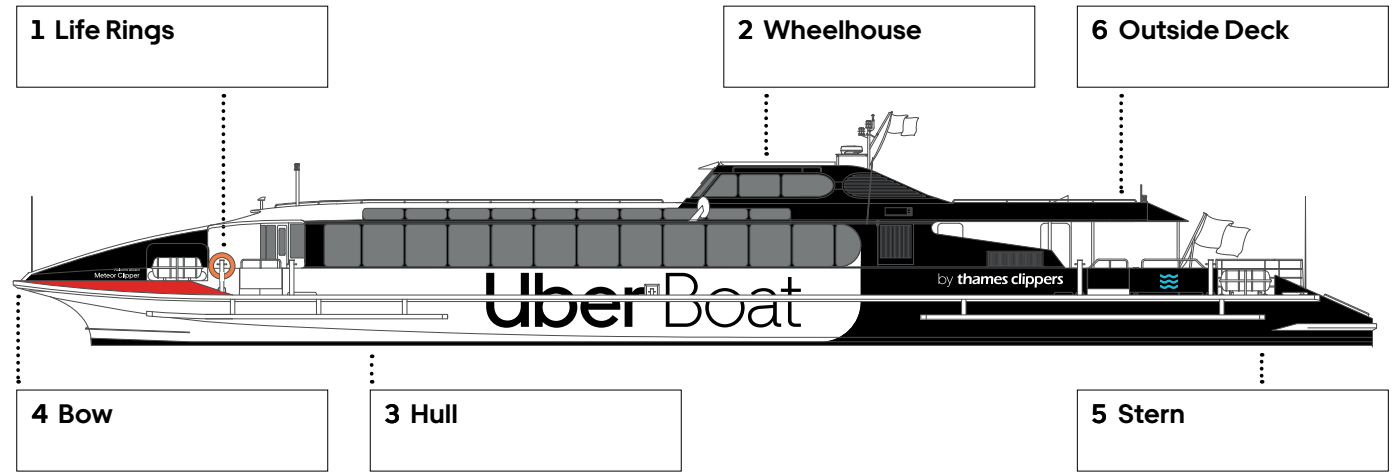


# Know your vessel

Captains need to know their vessels inside-out and sometimes use specific words to describe parts of a boat.

On the water, we say “port” to mean the vessel’s left side and “starboard” to mean its right side. “Stern” is what we call the back of a vessel, if something is “aft” it is near the stern. The front of a boat is called a “bow”.

Can you label Meteor Clipper?



**Outside Deck**  
Decks are what the floors of a boat are called; most of our vessels have an outside deck.

**Stern**  
Back of the boat.  
**Wheelhouse**  
Where the Captain steers the boat.

**Life Rings**  
Thrown by crew to help recover people if they fall into the water.  
**Bow**  
Front of the boat.

**Hull**  
The part of the boat in the water. Most of our vessels are catamarans which have two hulls.

## Maintaining our fleet



**Galaxy in dry dock**  
At least once per year, our vessels are taken out of the water so that they can be inspected at our dry dock. This image shows Galaxy Clipper being inspected, can you see her two hulls?



**Propeller**  
Our fastest boats can travel at 32 knots, which is roughly 37 mph! To reach high speeds, vessels use jets to blast through the water. At slower speeds, propellers, like the one shown here, keep the boat moving.



**Engine**  
Boat engines are much bigger than car engines! This image shows Aurora Clipper getting a new engine.



# Know your crew

A Captain is nothing without a loyal crew!

There are lots of different jobs on the River Thames, can you match the jobs with their description?

You can tell which job someone has on the boats by the number of stripes on their insignia bars, which are pinned to their shirt's collars.



**DCSA**  
2 gold



**Mate**  
3 gold



**Captain**  
4 gold

**A** Assists the Captain in all duties and is second in command on the boat.  
Is in charge of securing the boat to the pier when it moors and throws the first rope onto the pier's bollard.  
Allows passengers on and off the boat.

**B** Has overall control and pilots the boats along the river - our boats have a joystick instead of a steering wheel!  
Has to be skilled and have relevant knowledge of the Thames.

**C** Maintains and inspects the fleet and fixes mechanical issues.  
Has to have a good understanding of how the vessels work.

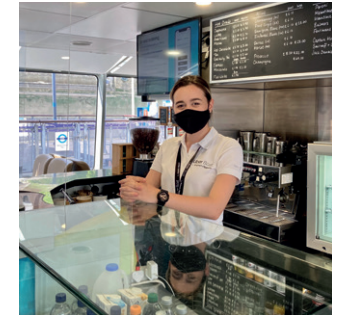
**D** Staffs the bar and serves customers drinks and snacks.  
Prepares food and hot drinks.  
Helps answer passengers' questions.

**E** Assists the Mate in securing the boat, throws the second rope.  
Takes a passenger count and answers questions on board.

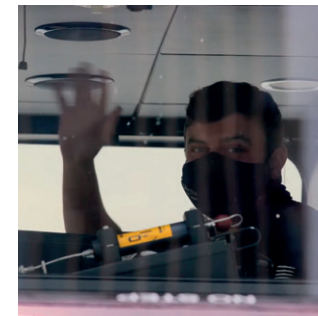
**F** Welcomes passengers to the pier and helps them to safely board the boat.  
Checks where customers are going and makes sure they get on the right boat.  
Manages queues at the piers and counts the number of passengers getting on and off vessels.



CSA **F**



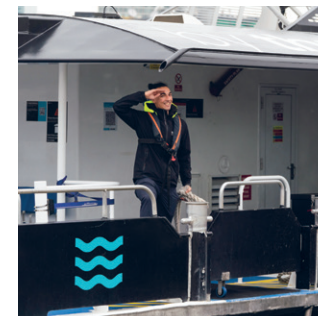
OCSA **D**



Captain **B**



Mate **A**



DCSA **E**



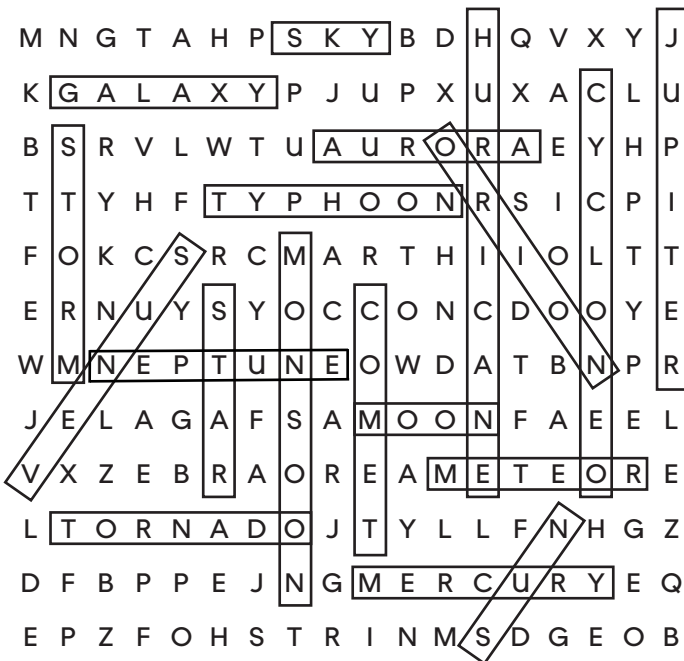
Engineer **C**

# X Buried Treasure

Uh-oh! It looks like these Clippers have got caught in a muddle. Captains need to keep their vessels out of trouble, can you solve the problems below?

## Wordsearch

Can you find the names of all our Clippers below?

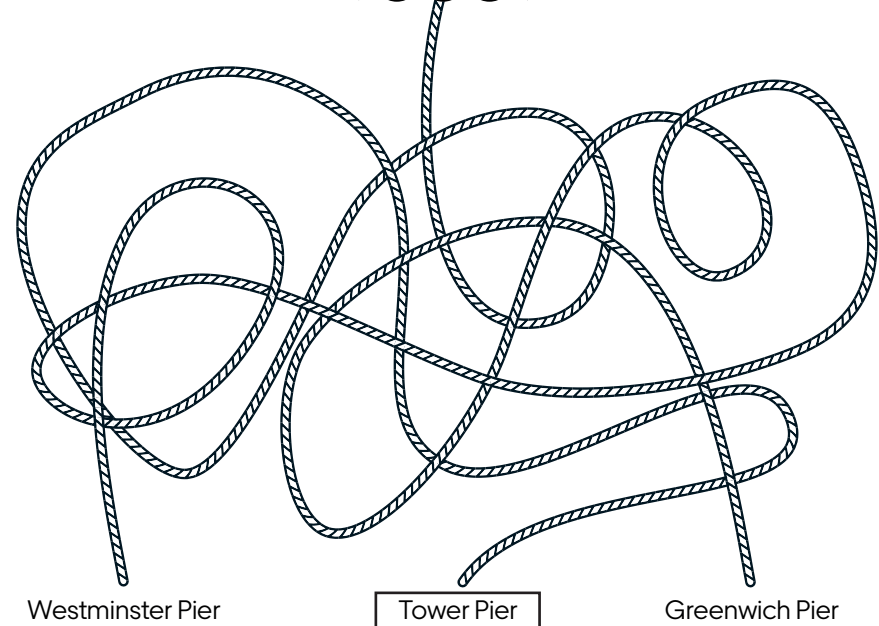


- Aurora
- Comet
- Cyclone
- Galaxy
- Hurricane
- Jupiter
- Mercury
- Meteor
- Monsoon
- Moon
- Neptune
- Orion
- Sky
- Star
- Storm
- Sun
- Tornado
- Typhoon
- Venus



## Tangled!

Follow the ropes to find out where Aurora is going...



## Maths Corner

### Question 1

Every passenger must have a seat, so it's important to know how many passengers are on board. If there are 50 people on board when we arrive at Greenwich Pier, 10 people get off and 40 people get on, how many people are on board?

### Question 2



Uber Boat by Thames Clippers have 8 large boats that need 4 crew members per boat to operate. How many crew members are needed if all 8 boats are running?



# Captain's log

It is important for every Captain to keep a record of the day's activities. Use this page to draw your favourite memory from the river.

 Date of travel \_\_\_\_\_ 

 Time of departure \_\_\_\_\_ 

 Time of arrival \_\_\_\_\_ 

 The weather was \_\_\_\_\_ 

 The tide was \_\_\_\_\_ 

(High or Low? Look at the side of the river, if you can see sand and a green line on the banks, then the tide is low).

We'd love to see your memories too! Share your drawings with us on social    @thamesclippers

Check out [thamesclippers.com/learningtheropes](https://thamesclippers.com/learningtheropes) to find the answers!

Uber Boat

by **thames clippers**



# Congratulations

Well done Captain,  
you have passed your Learning the Ropes training.  
We hope to see you out on the river again soon!

Signed by



Date

